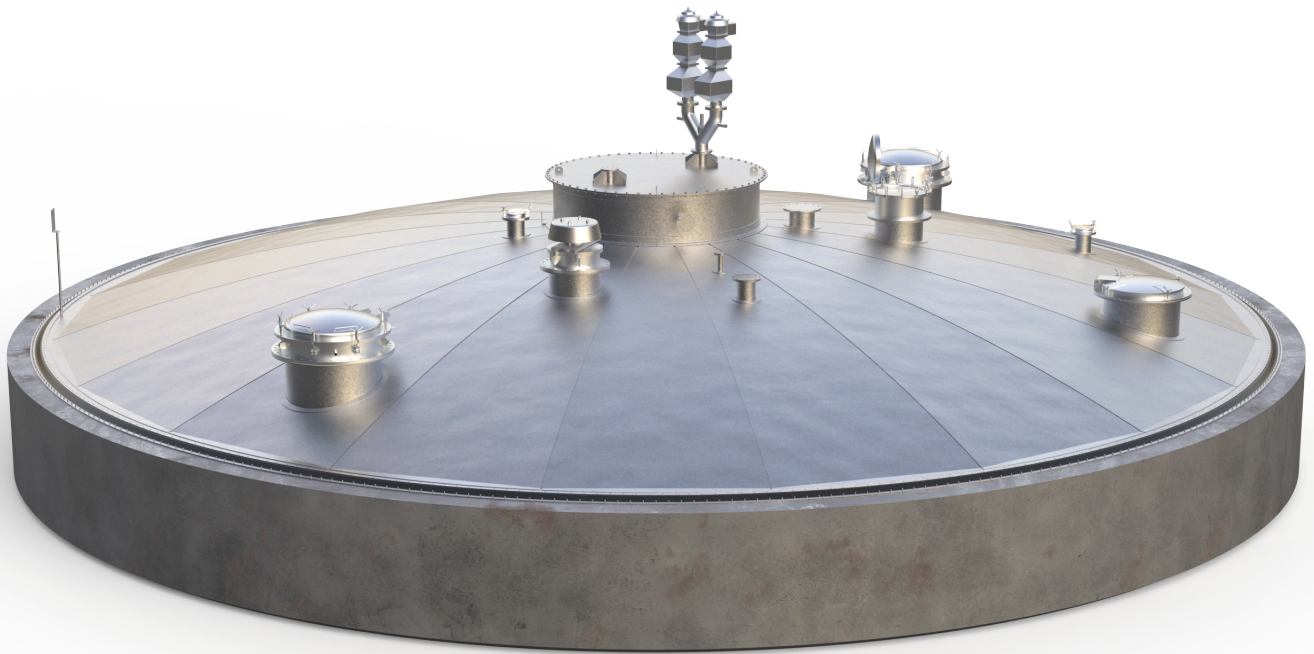


BIOSOLID | BIOGAS

ULTRAFIXED[™] STEEL COVER

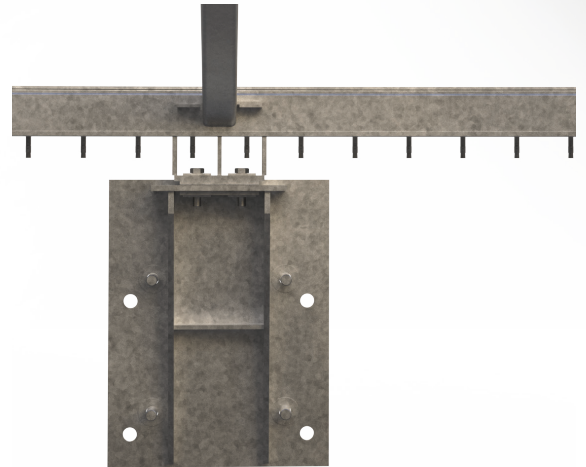
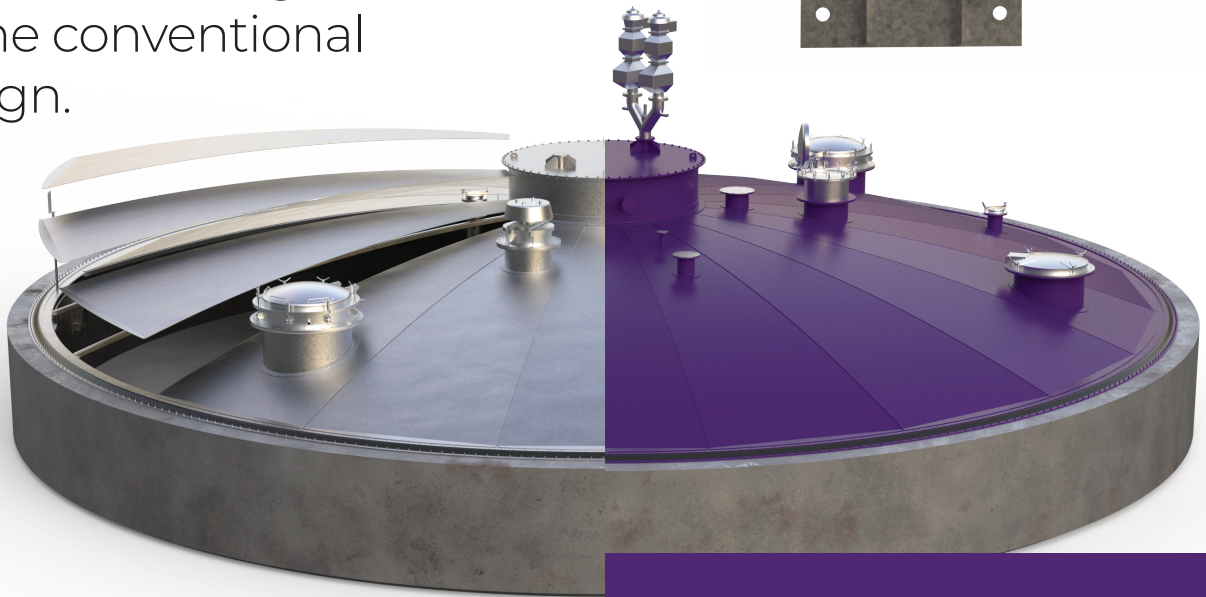
ANAEROBIC DIGESTER STEEL COVERS



Bringing water to life®

ULTRAFIXED™ STEEL COVER

Ovivo provides a variety of steel digester covers. The new Ovivo UltraFixed™ Steel Cover design introduces two unique structural changes to the conventional design.



- **ULTRAFIXED USES STAINLESS STEEL CORBELS TO SUPPORT THE COVER ON THE DIGESTER WALL, LOADING THE ANCHORS IN SHEAR AS OPPOSED TO IN TENSION ON TOP OF THE DIGESTER WALL.**
- **THE ULTRAFIXED DESIGN USES A MEMBRANE SEAL SYSTEM, WHICH ELIMINATES THE NEED FOR A SIDE SHEET AND ANNULAR FILLER MATERIAL.**

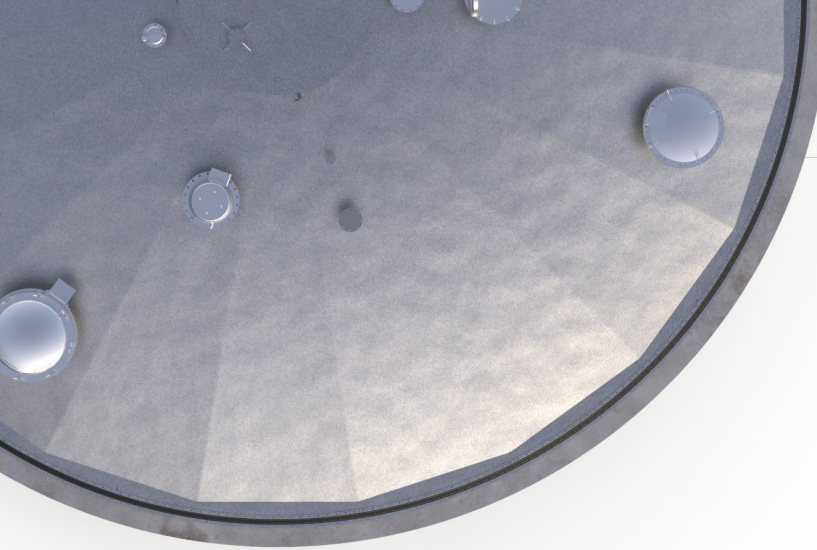
This unique design offers a fixed digester cover that is lighter and easier to install, operate, and maintain.

EZ-RECT™ SYSTEM

THE EZ-RECT™ COVER ERECTION SYSTEM IS A FEATURE WITH THE DIGESTER COVER. OVIVO OFFERS THIS OPTION TO REDUCE THE AMOUNT OF FIELD WELDING.

Ovivo will provide the digester cover with cover plate/radial beam sections pre-assembled, and finish welding in the shop to facilitate the erection of the cover. Each assembly will consist of two (2) beams and one (1) cover plate.

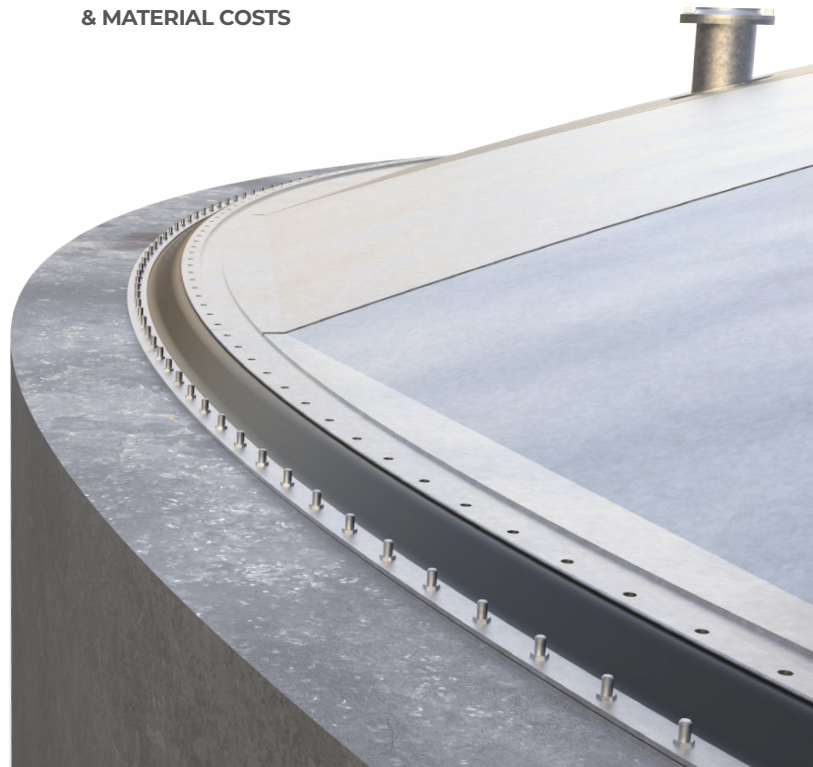
COVER ERECTION IS COMPLETED IN FOUR STEPS:



- NO SIDE SHEET REQUIRED
- EASY INSTALLATION & OPERATION
- EASY MEMBRANE SEAL REPLACEMENT
- LESS FIELD WELDING, PAINTING, & COATING
- REDUCED CONSTRUCTION & MATERIAL COSTS

UNIQUE BENEFITS

- The use of a membrane seal eliminates the side sheet and annular seal requirement for gas sealing, reducing weight, field welding requirements, and installation time.
- Compared to the conventional fixed cover design, the UltraFixed design allows for easier in-tank construction of the cover, eliminating the need for a heavy crane lift.
- The UltraFixed design loads concrete anchors in shear with ample edge distances as opposed to the conventional fixed cover design, which loads anchors in tension with limited edge distances atop the narrow digester wall.
- New steel corbels provide better control over leveling of the cover.
- The UltraFixed design allows for the membrane seal to be changed without having to drain the tank, providing ease of maintenance of the cover.



1 Center Ring and Erection Beam Installation

2 EZ-Rect Cover Plate Assembly Installation

3 Remaining Cover Plate Installation

4 Manholes, Spools, Tubes, etc., Installation

ovivowater.com
info@ovivowater.com



Bringing water to life®